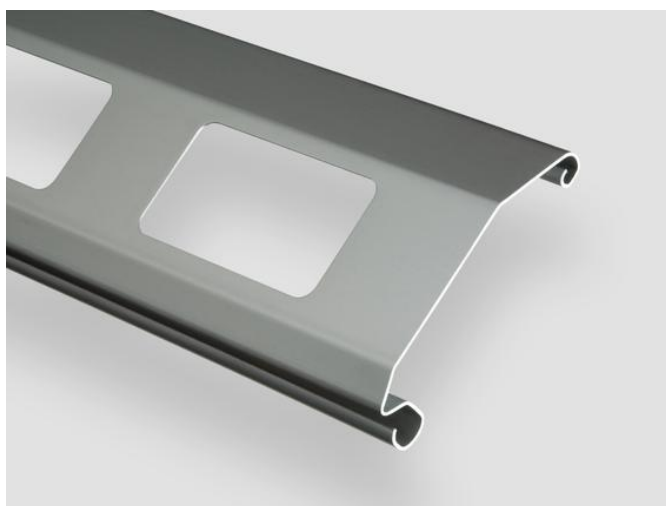


roller door profiles | perforated and grid profiles

1.1590 grid profile



description

Due to its sturdiness and size, the roller door section 1.1590 is preferred for wide roller doors.

It was designed to ensure that the eye was covered when it was closed so that no water can penetrate. As a result, it is suitable for use in extreme weather situations such as for roller doors which are supposed to remain mobile even in the face of severe frost.

When the roller door closes, the overlapping undersides of the sections cover the section beneath them, creating additional stability.

1.1590

number of slats per mtr	9
thickness of slats	32
minimum size of tube	159
fitting bottom rail(s)	1.1220 1.1299
size of grid cut-outs [mm]	100 x 55
number of grid cut-outs per mtr	6
air / light passage [%]	30

weight per m (m²) at 1,00 mm

galvanized steel	1,36 (12,24)
aluminium	0,48 (4,32)

thickness of material [mm]	1,00	1,25	1,50
galvanized steel	•	•	
galvanized steel, plastic coated	•	•	
aluminium, bright	•	•	•
aluminium, plastic coated	•	•	
stainless steel			

cross-sectional shape

3 cm

