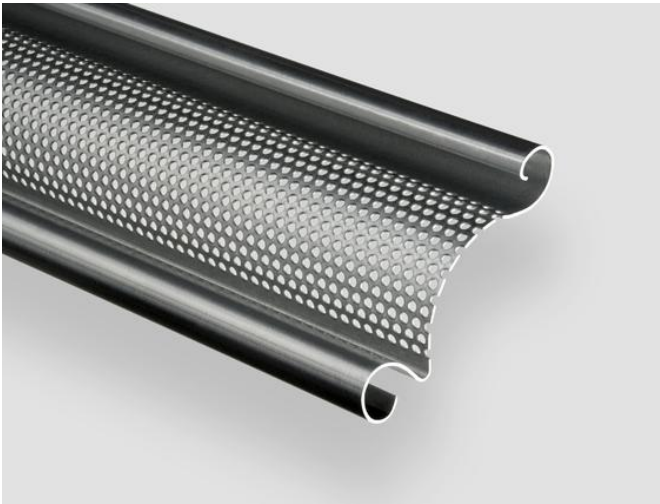


roller door profiles | perforated and grid profiles

## 1.146L perforated profile



### description

Its pronounced stability makes the roller door section 1.1460 first choice for single wall roller doors with increased loads, e.g. as a result of the large door dimensions or strong wind loads.

### 1.146L perforated profile

number of slats per mtr	10,3
thickness of slats	25
minimum size of tube	159
fitting bottom rail(s)	1.1230 1.1278
air / light passage [%]	~ 24 %

### weight per m (m<sup>2</sup>) in 1,25 mm

galvanized steel	1,56 (16,15)
aluminium	0,60 (6,18)

### thickness of material [mm]

galvanized steel	x
aluminium	x

### Maximale Torbreite in mm (wind class 2)

galvanized steel	8.800
aluminium	6.100

### cross-sectional shape

