



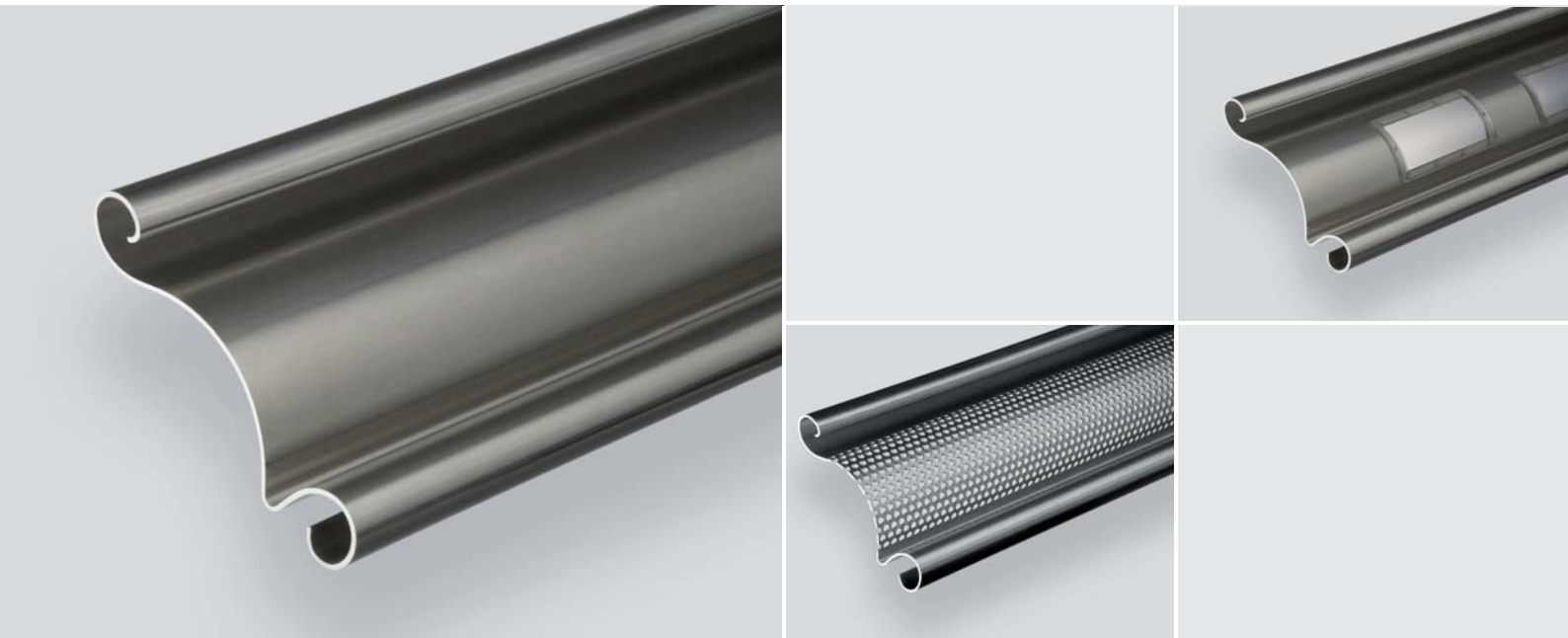
Roller door profile 1.1460

extra strong,
for large roller shutter doors
and increased loads.

ferdinand
braselmann.de

Vielfalt mit Profil

Roller door profile 1.1460



Its pronounced stability makes the roller door profile 1.1460 first choice for single wall roller shutter doors with increased loads, e.g. as a result of the large door dimensions or strong wind loads.

• technical details

slats on 1 m height: 10.3
thickness of slats: ~ 25 mm

• weight (at 1.00 mm)

steel, stainless steel ~ 1.64 kg/m (16.9 kg/m²)
aluminium ~ 0.56 kg/m (5.77 kg/m²)

• maximum door width [mm] (wind class 2, without storm hooks)

	1.00	1.25	1.5	2.00
steel, stainless steel	8400	9600	10500	12000
aluminium	6000	6500	7500	8600

• material thickness [mm]

	1,00	1,25	1,50	2,00
steel, galvanized	•	• ^P	•	•
steel, powder colour coated	•	• ^P	•	•
aluminium, bright	•	• ^P	•	•
aluminium, powder colour coated	•	• ^P	•	•
aluminium, plastic colour coated	•	•		
aluminium, anodized 3μ	•	• ^P	•	
aluminium, anodized 20μ	•	•	•	
stainless steel	•			

^P = perforated plate available

• calculated bale diameter (with top rail 1.1230)

opening height	tube diameter [mm]						
	159	169	194	219	267	324	368
3 m	390	390	400	420	440	480	520
3,5 m	400	410	410	430	470	500	540
4 m	420	440	440	460	480	510	540
4,5 m	440	440	440	460	490	530	580
5 m	460	470	480	480	510	540	580
6 m	500	500	500	520	530	560	610
7 m	520	520	520	550	570	600	620
8 m		550	560	560	600	620	660
10 m			600	620	640	660	700